



# HIGH FREQUENCY ECHO SOUNDER KIT\*



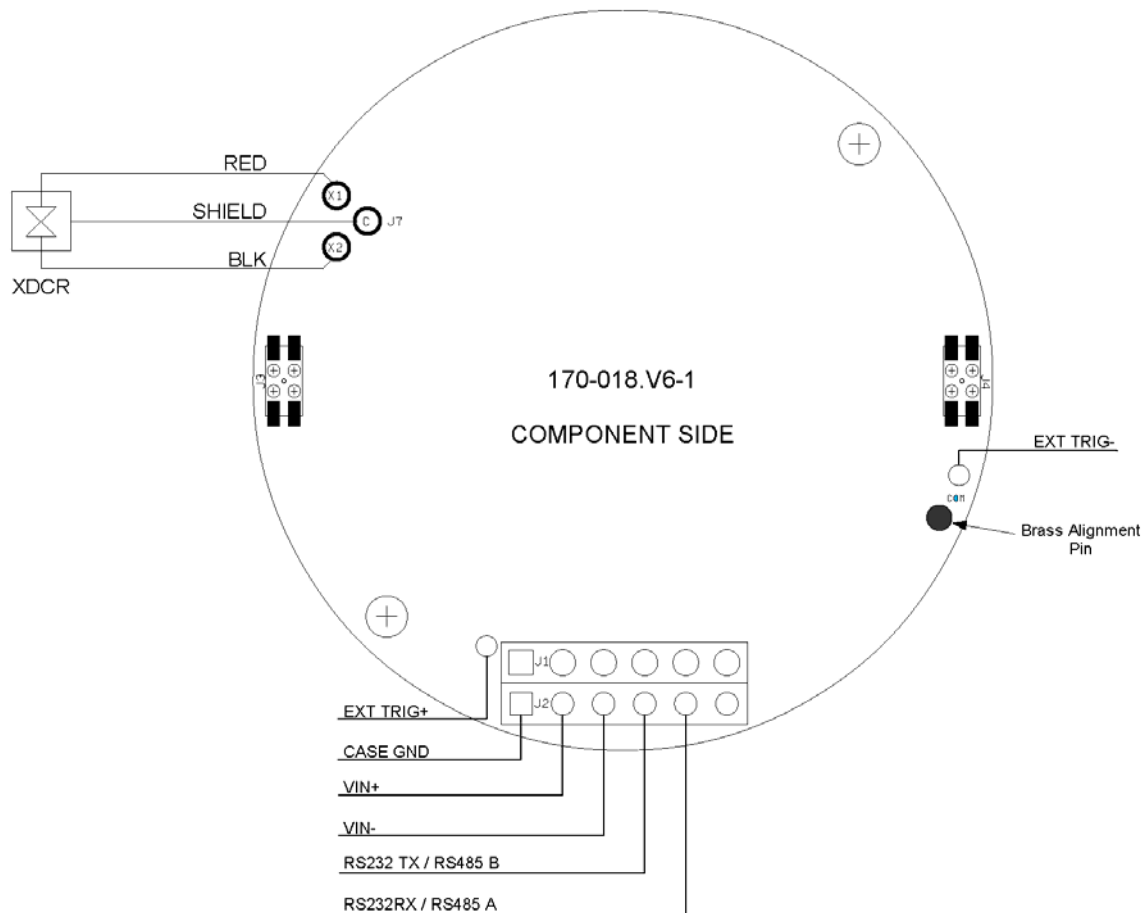
| <b>HARDWARE SPECIFICATIONS:</b> |   |
|---------------------------------|---|
| <b>FREQUENCY</b>                | 675 kHz   |
| <b>TRANSDUCER</b>               | Conical   |
| <b>TRANSDUCER BEAM WIDTH</b>    | 10°   |
| <b>RANGE RESOLUTION</b>         | 20 mm   |
| <b>MIN. DETECTABLE RANGE</b>    | 500 mm  |
| <b>INTERFACE</b>                | RS-485 @ 115.2 kbps (RS-232 optional)   |
| <b>POWER SUPPLY*</b>            | 9 – 50 VDC at less than 1.5 Watts   |
| <b>ELECTRONICS DIMENSIONS</b>   | 45.7 mm (1.8") diameter x 16.5 mm (0.65") high<br>41.28 mm (1.63") between mounting holes |
| <b>TRANSDUCER DIMENSIONS</b>    | See drawing on p. 3   |
| <b>WEIGHT: In Air</b>           | <b>Transducer</b> 21.65 g (0.76 oz)   |
|                                 | <b>Electronics</b> 17.30 g (0.61 oz)  |

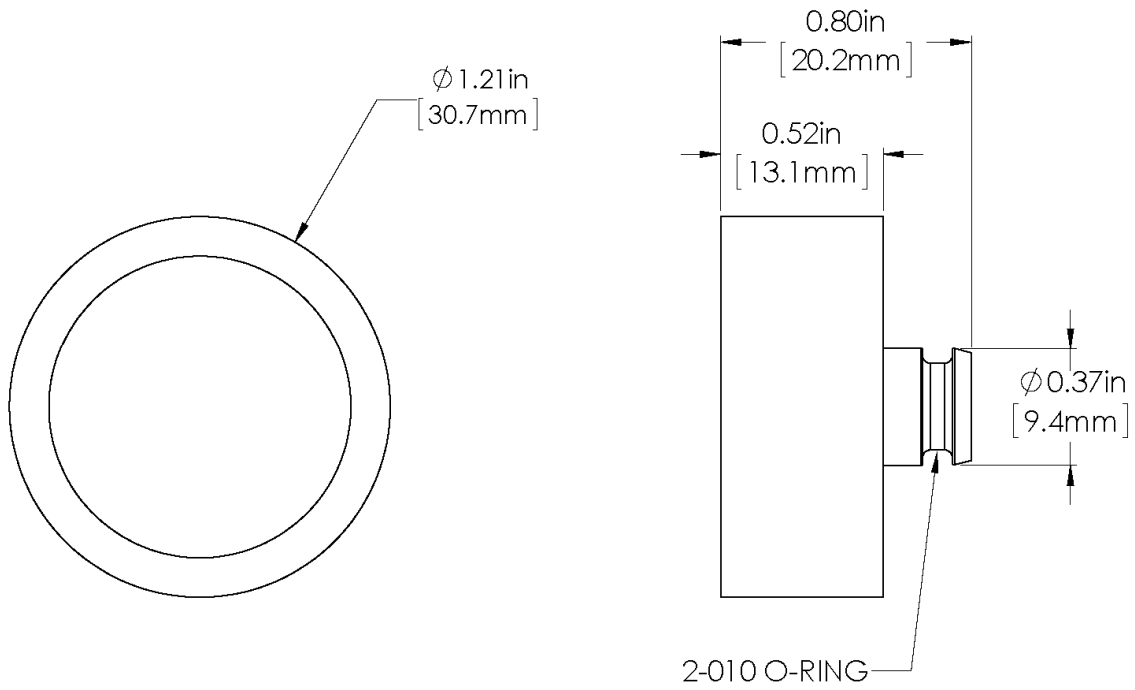
\*For echo sounders manufactured prior to April 2016, please contact Imagenex to confirm operating voltage.

\*Based on Imagenex Model 852 Ultra-Miniature Echo Sounder

|   |   |
|---|---|
| <b>SOFTWARE SPECIFICATIONS:</b>                   | <b>Win852.exe</b>   |
| <b>WINDOWS™ OPERATING SYSTEM</b>                  | Windows™ XP, Vista, 7, 8, 10  |
| <b>MODES</b>                                      | Echosounder   |
| <b>RANGE SCALES</b>                               | 5 m, 10 m, 20 m, 30 m, 40 m, 50 m   |
| <b>EXTERNAL INPUT</b>                             | Depth, Heading, Turns   |
| <b>FILE FORMAT</b>                                | (filename).852  |
| <b>RECOMMENDED MINIMUM COMPUTER REQUIREMENTS:</b> | 100 MHz Pentium<br>16 MB RAM<br>1 GB Hard Disk<br>800 x 600 x 256 colour graphics |

|  |                                     |
|--|-------------------------------------|
| <b>COMMUNICATIONS PROTOCOL SPECIFICATIONS:</b> |                                     |
| <b>SERIAL INTERFACE SPECIFICATION (v1.01)</b>  | Filename: 852 echo sounder spec.pdf |
| <b>SOURCE CODE AVAILABLE FOR TESTING</b>       | test852e.c                          |





| <b>ORDERING INFORMATION:</b> |                   |             |
|------------------------------|-------------------|-------------|
| <b>675 kHz UNIT</b>          | Standard          | 852-000-147 |
| RS-232                       | Option            | -006        |
| External Trigger             | Option (included) | -023        |

Product and company names listed are trademarks or trade names of their respective companies.